

SAYANG *Sembawang*

SEMBAWANG TOWN COUNCIL • SPECIAL ISSUE

A QUARTERLY PUBLICATION OF SEMBAWANG TOWN COUNCIL • MCI (P) 035/06/2024

SAYANG OUR FUTURE, *Sembawang Our Home*



Photo credit: LTA.gov.sg

Page 3

North-South Corridor:
Enhancing Connectivity from
Northern Region to the City



Photo credit: HDB.gov.sg

Page 6

Admiralty Place Extension:
Newly Refurbished Shopping
Experience



Page 22-23

Bukit Canberra:
Integrated Sports and
Community Hub



Photo credit: Woodlands Health Campus

Page 24

Woodlands Health Campus:
Major Health Hub for the
Northern Region

Sembawang Town

has transformed significantly over the years. Once a quiet, rural area known for its rubber plantations and zinc-roofed kampungs, it has evolved into a vibrant residential and industrial hub. In the past, Sembawang was home to naval bases and shipyards with a strong maritime heritage that shaped its early identity.



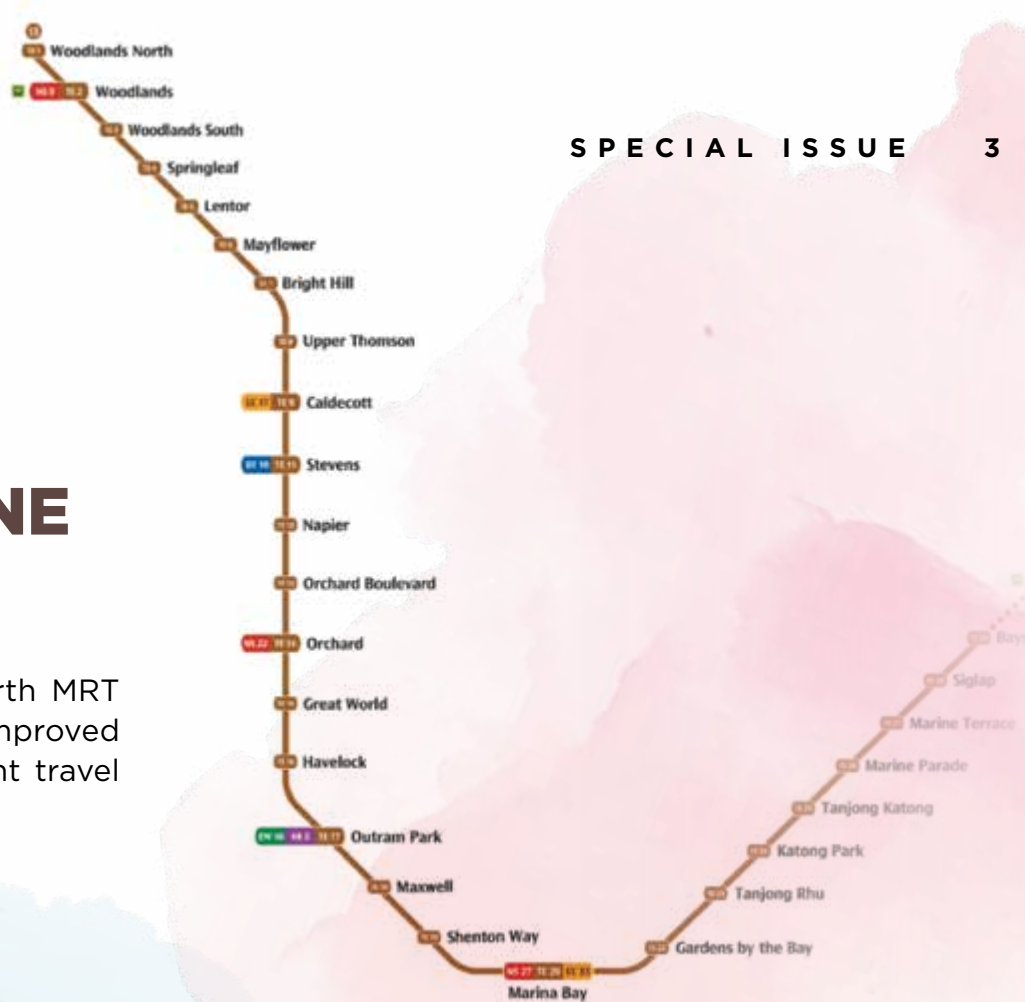
Photo credit: TheLongWindingRoad.wordpress.com

Today, modern housing estates, parks, and recreational facilities, such as Bukit Canberra Integrated Hub and the revamped Woodlands Waterfront, stand as symbols of its development. The community has grown more diverse and dynamic while retaining its strong sense of history and close-knit kampung spirit.



WOODLANDS SOUTH AND WOODLANDS NORTH THOMSON-EAST COAST LINE (TEL) STATIONS

The integration of Woodlands South and Woodlands North MRT stations with Woodlands MRT station has greatly improved intra-town connectivity. Residents now have more efficient travel options within and outside of Woodlands.



WOODLANDS UPGRADED INTEGRATED TRANSPORT HUB AND THOMSON-EAST COAST LINE (TEL) STAGE 4 OPENING

The upgraded Woodlands Integrated Transport Hub connects residents to the North-South Line and the TEL. With the opening of the TEL Stage 4 on 23 June 2024, travel options for residents in the northern region are significantly expanded. This marks a milestone in enhancing connectivity for the northern region. As our GRO advisers champion these developments, the changes continue to play a crucial role in shaping the growth of Sembawang Town and ensuring residents enjoy seamless public transport options that extend beyond Woodlands.

WOODLANDS NORTH MRT STATION TO JOHOR IN 2027 AND TO EAST COAST PARKWAY IN JUNE 2024

Exciting developments are coming to Woodlands North MRT station! By 2027, our station will be the Singapore terminus for the Rapid Transit System Link to Johor Bahru. This game-changing project will cut down cross-border travel to just five minutes, ease Causeway congestion, and make commutes to Malaysia quicker. Meanwhile, in June 2024, the TEL was extended to East Coast Park, giving residents a direct link from the north to Singapore's southeastern recreational coast. Advisers for Sembawang GROs have been instrumental in supporting these projects while advocating for residents' needs.





BUS SERVICE 861 **NEW!**

The newly-introduced bus service 861 provides a direct and efficient connection between Yishun and Sembawang, improving daily commutes for residents in the northern region of Singapore. Operating between Yishun MRT station, Canberra MRT station, Yishun Avenue 6, Yishun Avenue 1, and Sembawang MRT station, it reduces travel time and eliminates transfers. With frequent intervals, especially during peak hours, bus service 861 enhances accessibility and convenience between these two key towns.

SIMPANG KIRI-YISHUN AVENUE 8 EXTENSION TO SEMBAWANG ROAD/ADMIRALTY ROAD EAST

The new Simpang Kiri-Yishun Avenue 8 Extension is ready to provide improved connectivity between Yishun Avenue 8 and Sembawang Road/Admiralty Road East, reducing travel times and easing traffic congestion. This extension is part of ongoing efforts to enhance infrastructure in the north, a goal actively supported by advisers of Sembawang GROs to meet the growing population and make daily commutes easier. Stay tuned for more updates on this important development!



SILVER ZONE

In the last five years, Sembawang Town has seen several new Silver Zones. These are specially designated areas aimed at enhancing safety for elderly pedestrians. The most recent Silver Zones established include:

**Woodlands
Ring Rd**

**Woodlands
Dr 63**

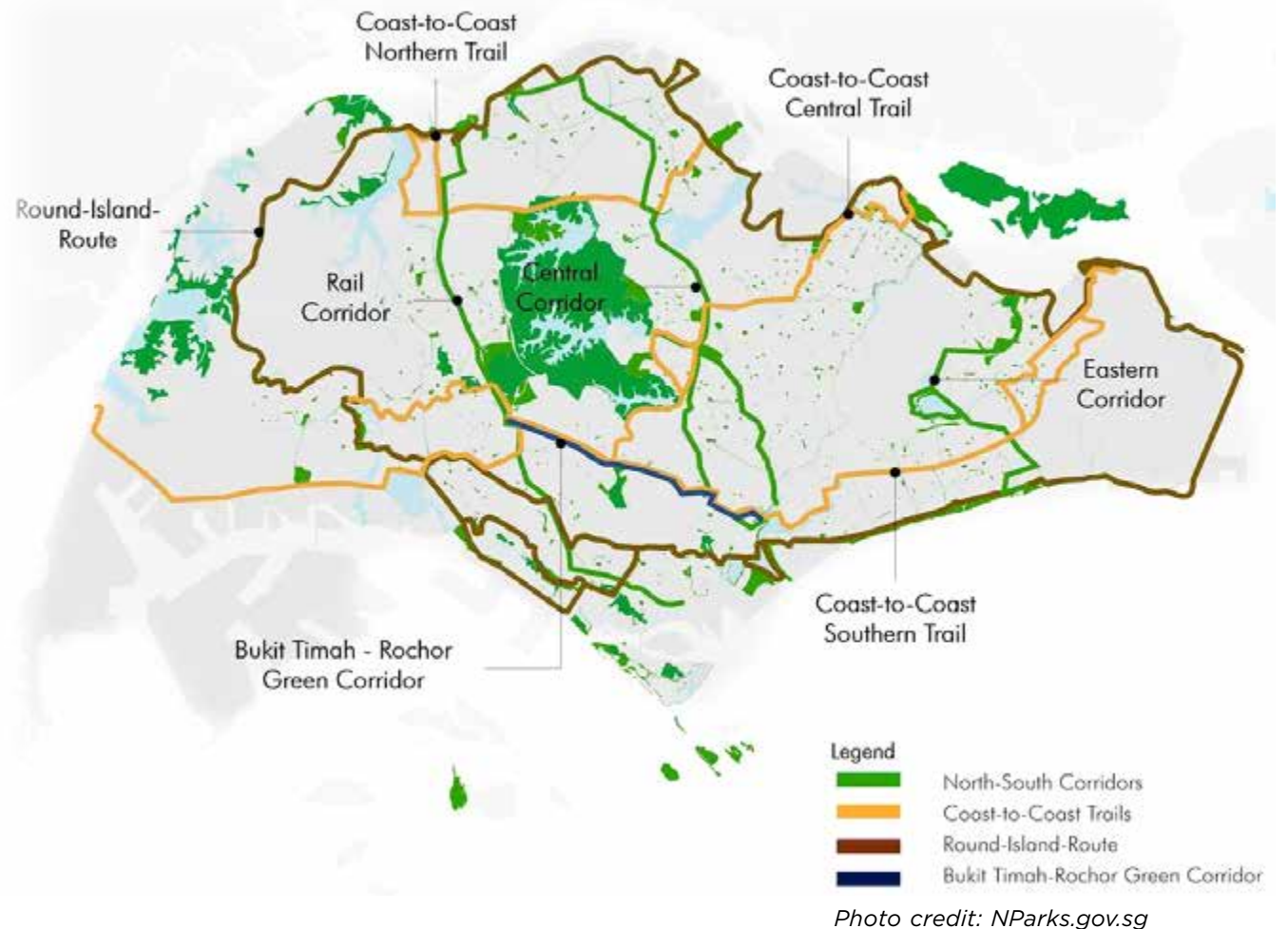
**Woodlands
Dr 71**

**Woodlands
Ave 1**

To create safer streets for the elderly, vehicle speeds in these zones are limited to 30-40 km/h. These Silver Zones are part of a broader initiative to promote a safer and more inclusive environment for all residents, especially the elderly.

ROUND ISLAND CYCLING ROUTE

The Round Island Route takes cyclists on an exhilarating ride around the island. It passes through several neighbourhoods, including the scenic stretch from Sembawang to Woodlands. Below is an overview of this revitalising stretch of the route, which features beautiful coastal views.



STARTING AT SEMBAWANG

TRANSITIONING TO WOODLANDS

Sembawang Park

Cyclists often start their journey near Sembawang Park, a quiet coastal spot with a rich history. The park offers scenic sea views and lush greenery, setting a peaceful tone for the ride.

Heritage and Nature

Passing through Sembawang, cyclists may catch a glimpse of historic landmarks, like the Beaulieu House, and enjoy the greenery that lines the streets. It is a calm and pleasant environment to kick off this leg of the event.

Sembawang Road

As the ride progresses, cyclists can make their way down Sembawang Road, a main arterial road connecting to Woodlands. This section is known for its gentle slopes and wide roads, offering a smooth cycling experience.

Woodlands Waterfront

Upon reaching Woodlands, cyclists will enjoy a stunning ride past Woodlands Waterfront Park. The long jetty offers panoramic views of the Johor Straits, and cyclists can take in the cool breeze and serene atmosphere.

Rest Points

Rest points are set up in Woodlands so riders can take a short break, hydrate, and refuel before continuing their journey. Woodlands' cycling paths are also well-organised, and they ensure a safe transition to the next leg of the ride.

The Sembawang to Woodlands stretch is a key part of the Round Island Cycling experience, combining natural beauty with smooth, accessible routes.

INTEGRATED GREEN GATEWAY AND CONNECTIVITY

Designed to seamlessly connect various green spaces and recreational areas, the Integrated Green Gateway and Connectivity initiative in Sembawang Town represents a significant enhancement to the town's urban infrastructure. This initiative includes the development of park connectors, extended cycling pathways, and linking pathways that integrate with gardens and parks throughout Sembawang Town. By expanding and linking these pathways, the initiative promotes a healthier and more active lifestyle among residents. As these improvements enhance town connectivity, they also foster a stronger sense of community and well-being, making Sembawang Town a more vibrant and accessible place to live.

CANBERRA PLAZA

Canberra Plaza, a striking landmark inspired by a flowing river with its undulating bands, is seamlessly connected to Canberra MRT station. The plaza features charming gardens, trails, and a water play park, creating inviting spaces for community interaction and a variety of engaging activities. Home to over 30 retail, service, and F&B outlets catering to all age groups, it significantly enhances the area's living experience. Its close proximity to the MRT station makes it easily accessible to residents across Sembawang, offering a great shopping destination for all.



ADMIRALTY PLACE

The newly refurbished Admiralty Place offers a dynamic shopping experience with a convenient link bridge to Kampung Admiralty. This thoughtfully designed development brings together retail stores, dining options, and essential services, making it easy to run errands or enjoy a leisurely day.

Beyond its commercial offerings, Admiralty Place also features integrated community spaces like parks and recreational areas that encourage an active, social lifestyle in a welcoming and safe environment. With easy access to Admiralty MRT station and nearby bus stops, it's a convenient destination for residents across Sembawang to shop, dine, and unwind.

Whether you're looking for goods, services, or a variety of dining choices, Admiralty Place has something for everyone — making it a true hub for residents of all ages to enjoy.





WOODLANDS NORTH PLAZA

Located along Woodlands Street 82, Woodlands North Plaza provides a wide variety of goods and services for residents. It has a 24-hour The Coffee Bean & Tea Leaf outlet, supermarket, fast food restaurants, and healthcare services. A spacious and inviting community plaza, it provides residents with the perfect space to socialise and connect.



Unique Parks and Playgrounds

Woodlands Crescent Park, Admiral Garden, and Montreal Green Park are three beloved green spaces in Sembawang Town, each offering a unique charm and recreational experience. Woodlands Crescent Park provides a peaceful setting with jogging tracks and fitness stations, perfect for residents seeking relaxation and outdoor activities. Admiral Garden, with its lush landscaping and scenic paths, invites visitors to unwind and enjoy family-friendly spaces. Montreal Green Park, nestled in a quiet Canberra neighbourhood, offers open greenery and playgrounds, creating a serene retreat for the community. Together, these parks enhance the quality of life in Sembawang Town, promoting healthy living and fostering community connections.

WOODLANDS CRESCENT PARK



ADMIRAL GARDEN



MONTREAL GREEN PARK



Sembawang provides a wide range of fitness facilities designed to meet residents' needs and encourage active lifestyles. We are committed to continually enhancing these amenities based on community feedback, and our Sport-in-Precinct (SIP) facilities are a prime example. Additionally, residents enjoy easy access to recreational spaces near their homes, including multi-purpose courts, fitness corners, and badminton courts, eliminating the need to travel to specialised centres.



NEW PICKLEBALL COURT AT BLK 508C WELLINGTON CIRCLE

We are excited to share the success of a recent community project: the new pickleball court at Blk 508C Wellington Circle! A group of pickleball enthusiasts in Sembawang requested a dedicated space to play. In response, the town council transformed an under-used street soccer court into a vibrant pickleball facility. This upgrade not only resolved noise issues for nearby residents but also met the high demand for this growing sport.

WOODLANDS SPORTS PAVILION

Discover Woodlands Sports Pavilion, where diverse sports come together under one roof. Rain or shine, enjoy a range of activities including soccer, badminton, and basketball — all in one convenient location!



SIP@ WELLINGTON CIRCLE

Experience healthy living right at your doorstep with SIP@ Wellington Circle! Stay active with convenient access to table tennis, fitness equipment, street soccer, and basketball.

To enhance the quality of life for residents, the Neighbourhood Renewal Programmes (NRPs) focus on upgrading and constructing facilities that offer more recreational options. NRPs aim to improve the neighbourhood's physical landscape, connectivity, and accessibility for added convenience. Key upgrades include covered walkways, children's playgrounds, fitness corners, elderly fitness areas, widened footpaths, barrier-free access ramps, and renovated activity plazas. Sembawang Town Council collaborates with GROs and advisers for Sembawang GRC to gather resident feedback in selected precincts. This programme allows residents to influence the design of their neighbourhood based on their lifestyle and recreational needs. Importantly, the Government fully covers the costs of these upgrades, so residents incur no expense.

UPCOMING PROJECTS

Blks 701-713, 701A (MSCP) & 709A (MSCP) Woodlands Drive 40/70



Blks 601-605 Woodlands Dr 42



**Blks 714-720, 714A (MSCP) & 718A (MSCP)
Woodlands Ave 6**



ONGOING PROJECTS

Blks 870-882, 874A (MSCP) & 881A (MSCP) Woodlands Ave 9



REV UP WITH GREEN POWER: EV CHARGING POINTS READY!

In line with the Singapore Green Plan 2030, Sembawang Town Council is partnering with the Land Transport Authority's chosen vendor to install electric vehicle (EV) charging stations. This initiative aims to enhance convenience and accessibility for EV owners in Sembawang Town. Currently, there are 78 charging stations ready in the area, with plans to expand to 12,000 charging points across all HDB towns by 2025.



Find your nearest EV charging station

- Blk 102 Canberra St
- Blk 106 Canberra St
- Blk 109 Canberra Walk
- Blk 115 Canberra Walk
- Blk 121 Canberra St
- Blk 126 Canberra St
- Blk 129 Canberra St
- Blk 132 Canberra View
- Blk 306B Canberra Rd
- Blk 330A Sembawang Close
- Blk 335A Sembawang Close
- Blk 361 Sembawang Cres
- Blk 404A Admiralty Link
- Blk 424A Canberra Rd
- Blk 466 Sembawang Dr
- Blk 467/467A/467B Admiralty Dr
- Blk 476A Sembawang Dr
- Blk 482A Admiralty Link
- Blk 484A Admiralty Link
- Blk 492A Admiralty Link
- Blk 546A Woodlands Dr 16
- Blk 549A Woodlands Dr 44
- Blk 644A Woodlands Ring Rd
- Blk 661A Woodlands Ring Rd
- Blk 667A Woodlands Ring Rd
- Blk 671A Woodlands Dr 71
- Blk 681 Woodlands Dr 62
- Blk 685 Woodlands Dr 73
- Blk 689 Woodlands Dr 75
- Blk 574 Woodlands Dr 16
- Blk 578A Woodlands Dr 16
- Blk 586A Woodlands Dr 16
- Blk 592 Montreal Link
- Blk 608A Woodlands Ring Rd
- Blk 622A Woodlands Dr 52
- Blk 630A Woodlands Ring Rd
- Blk 690 Woodlands Dr 75
- Blk 691 Woodlands Dr 73
- Blk 694 Woodlands Dr 62
- Blk 701A Woodlands Dr 40
- Blk 714A Woodlands Dr 70
- Blk 718A Woodlands Ave 6
- Blk 721A Woodlands Ave 6
- Blk 728A Woodlands Circle
- Blk 737A Woodlands Circle
- Blk 748A Woodlands Circle
- Blk 757A Woodlands Ave 4
- Blk 759A Woodlands Ave 6
- Blk 773A Woodlands Dr 60
- Blk 782 Woodlands Cres
- Blk 783 Woodlands Rise
- Blk 799 Woodlands Dr 60
- Blk 823A Woodlands St 82
- Blk 824A Woodlands St 81
- Blk 846A Woodlands Ave 4
- Blk 859A Woodlands St 83
- Blk 866A Woodlands St 83
- Blk 881A Woodlands St 82
- ...and more!

Drivers can download the **MyTransport.SG** app to locate their nearest charging point.

COVERED LINKWAYS & DROP-OFF PORCHES

COVERED LINKWAYS

154

COMPLETED
(2020-2024)

DROP-OFF PORCHES

25

COMPLETED
(2020-2024)



44 THEMED PLAYGROUNDS

COMPLETED (2020-2024)



43 FITNESS CORNERS

COMPLETED (2020-2024)



SUPPORTING THE GREEN THUMBS OF SEMBAWANG GRC

Exciting new community and rooftop gardens are blossoming, offering green-thumbed residents ideal spaces to grow fruits and flowers!

Currently, Sembawang boasts a total of 54 new/upgraded community gardens from 2020 to 2024.

54
COMPLETED
(2020-2024)



Home Improvement Programme

The upcoming/on-going Home Improvement Programme (HIP) is designed to enhance the safety, comfort, and living environment of our estate. Supported by the Housing and Development Board, the HIP addresses critical repairs, such as spalling concrete and upgrading electrical systems. Residents can also choose from optional upgrades, including bathroom renovations and new doors and gates. The HIP is implemented systematically to minimise inconvenience, with three main components: Essential Improvements, Optional Upgrades, and Enhancement for Active Seniors.

- Blks 601-605 Woodlands Dr 42
- Blks 851 & 856-864 Woodlands St 83
- Blks 701-713 Woodlands Dr 40/70
- Blks 744-747 Woodlands Circle
- Blks 714-720 Woodlands Dr 70/Ave 6
- Blks 659-664 Woodlands Ring Rd



Lift Improvements

The Lift Enhancement Programme (LEP) and Lift Replacement Programme (LRP) were introduced to improve accessibility for residents. These programmes are especially beneficial for the elderly, those with mobility challenges, and families with young children. By 2024, 336 lifts were replaced under LRP and 429 lifts underwent LEP.

765
COMPLETED
(2020-2024)



Sembawang is thrilled to welcome more residents to our neighbourhood with the completion of additional Build-to-Order projects!

WOODLANDS SOUTH PLAINS (ADMIRALTY)

Woodlands South Plains is thoughtfully designed with wellness at its core. The development features expansive green spaces, 3Gen facilities, shelters, well-shaded areas, thematic gardens, and Active, Beautiful, Clean Waters design elements, all aimed at providing relaxation and rejuvenation.



CHAMPIONS BLISS (ADMIRALTY)

Champions Bliss embodies joy and tranquility. It offers a range of active and green spaces to enhance activity and leisure for residents. The development includes fitness stations, playgrounds, and a rooftop garden above the multi-storey car park.



SUN SAILS (SEMBAWANG CENTRAL)

Drawing inspiration from Sembawang's maritime heritage, Sun Sails reflects nautical themes in its design. The facade echoes the image of sailboats at sea, and the children's playground features playful boat structures.



CANBERRA VISTA (SEMBAWANG CENTRAL)

Canberra Vista is designed as a sanctuary amidst nature, featuring numerous green spaces throughout the estate. The development also includes a childcare centre and a Residents' Committee Centre to cultivate a community-oriented environment.





Chairman's Message

Dear Residents,

As we come to the end of this term of Government, we look back at some of the key developments in our community over the last five years. Sembawang Town continues to evolve into a modern, connected, and inclusive place for all residents, while still retaining its rich history and unique identity.

We are grateful to the many of you who have made contributions to the development of our Sembawang Town. For those who shared feedback, your insights and suggestions have played an important role in shaping the projects and improvements we see today.

Significant new developments over the last five years include Bukit Canberra, the redeveloped Admiralty Place and the Woodlands Health Campus. These have brought important new amenities and conveniences to residents. The extension of the Thomson-East Coast line, first to the city and later to the east, has made transport significantly more convenient for our residents.

In Canberra, we have seen progress with new amenities and residential developments, making it a sought-after area for families. The ongoing construction of new Build-to-Order (BTO) flats will provide more housing options, allowing even more Singaporeans to call Sembawang home.

We supported our seniors through the Silver Upgrading Programme. This initiative aims to improve the living conditions of our elderly residents, ensuring they have access to safe, elder-friendly facilities and services.

In the coming years, one of the most anticipated major projects is the transformation of Woodlands North Coast, which will become a waterfront destination offering new commercial opportunities, work, living and recreational spaces, and seamless connectivity to the Johor Bahru-Singapore Rapid Transit System (RTS) Link. This development will create a lively hub for both work and leisure, enhancing the appeal of the northern region.

Sembawang Town's growth is a testament to our shared vision of creating a town that is future-ready, yet deeply rooted in its history and community spirit.

We hope you enjoy this special edition and have a great 2025!

Vikram Nair
Chairman
Sembawang Town Council

尊敬的各位居民，

值此本届政府任期届满之际，让我们共同回顾过去五年社区发展的关键历程。三巴旺市镇始终在现代化进程中稳步前行，既保持着四通八达的便利性与包容开放的社区精神，又延续着丰富的历史底蕴与独特的区域特色。

我们衷心感谢所有为三巴旺发展贡献力量的热心居民。特别要感谢那些积极建言献策的居民们，正是您们的真知灼见，铸就了今日我们所见到的各项社区提升工程。

过去五年间，武吉坎贝拉综合社区中心、焕然一新的海军部坊及兀兰医疗园区相继落成，为居民生活带来了全新便利设施。汤申-东海岸地铁线先后贯通市中心与东部区域，显著提升了本区的交通便捷度。

坎贝拉随着新设施与住宅项目的推进，已发展成为备受家庭青睐的宜居社区。持续兴建中的预购组屋项目将提供更多住房选择，让更多新加坡人得以安居三巴旺。

通过乐龄翻新计划，我们着力改善年长居民的居住环境，确保他们能享有安全适老的设施与服务。

展望未来，最令人期待的当属兀兰北岸开发项目，这里将打造集商业机遇、工作空间、滨水住宅与休闲场所于一体的活力新区，并通过新柔捷运系统（RTS）实现与柔佛新山的无缝衔接，势必将北部区域提升为工作休闲两相宜的都会亮点。

三巴旺市镇的发展轨迹，正是我们对“传承历史文脉、凝聚社区精神、打造未来市镇”这一共同愿景的最佳诠释。

愿这份特刊让你满意并伴您度过美好的2025年！

维凯
三巴旺市镇理事会主席

Penduduk yang dihormati,

Seiring dengan berakhirnya penggal pemerintahan ini, kami mengimbas kembali kepada beberapa perkembangan utama dalam komuniti sepanjang 5 tahun yang lalu. Bandar Sembawang terus berkembang menjadi tempat yang moden, terhubung dan inklusif untuk semua penduduk, sambil mengekalkan sejarah yang kaya dan identiti uniknya.

Kami berterima kasih kepada ramai di antara anda yang telah menyumbang kepada pembangunan Bandar Sembawang kami. Bagi mereka yang berkongsi maklum balas, pandangan dan cadangan anda telah memainkan peranan penting dalam membentuk projek dan penambahbaikan yang kita lihat hari ini.

Perkembangan baru yang ketara sepanjang lima tahun lalu termasuk Bukit Canberra, Admiralty Place yang dibangunkan semula dan Kampus Kesihatan Woodlands. Ini telah menyediakan kemudahan dan keselesaan baru yang penting kepada penduduk. Sambungan laluan Thomson East Coast, pertama ke bandar dan kemudiannya ke Timur Singapura, telah memudahkan pengangkutan dengan ketara bagi penduduk kami.

Di Canberra, kami telah menyaksikan kemajuan dengan kemudahan baru dan pembangunan perumahan, menjadikannya kawasan yang diingini untuk keluarga. Pembinaan flat Bina Ikut Tempahan (BTO) baru yang sedang berlangsung akan menyediakan lebih banyak pilihan perumahan, membolehkan lebih ramai rakyat Singapura menjadikan Sembawang sebagai rumah mereka.

Kami menyokong warga emas kami melalui Program Peningkatan Silver Upgrading. Inisiatif ini bertujuan untuk memperbaiki keadaan kehidupan penduduk warga emas kami, memastikan mereka mendapati akses kepada kemudahan, perkhidmatan yang selamat dan mesra warga emas.

Pada tahun mendatang, salah satu projek utama yang paling dinantikan adalah transformasi Pantai Utara Woodlands (Woodlands North Coast), yang akan menjadi destinasi tepi pantai yang menawarkan peluang komersil baru, ruang pekerjaan, kediaman dan rekreasi serta ketersambungan yang lancar melalui Laluan Sistem Transit Laju (RTS Link) Singapura-Johor Bahru. Pembangunan ini akan mewujudkan hab yang hidup dan meriah untuk kerja dan santai, meningkatkan daya tarikan wilayah utara.

Pertumbuhan Bandar Sembawang adalah bukti kepada visi bersama kami untuk mewujudkan sebuah bandar yang siap sedia menghadapi masa hadapan, namun tetap berakar umbi dalam sejarah dan semangat kemasyarakatannya.

Kami harap anda menikmati edisi istimewa ini dan selamat menjalani tahun 2025!

Vikram Nair
Pengerusi
Majlis Bandaran Sembawang

அன்பான குடியிருப்பாளர்களே,

இந்த அரசாங்கத்தின் பதவிக்காலம் முடியும் தருவாயில், கடந்த 5 ஆண்டுகளில் நமது சமூகத்தில் ஏற்பட்ட சில முக்கிய வளர்ச்சிகளை நாம் திரும்பிப் பார்வையிடுவதற்கு நேரம் வந்துவிட்டது. செம்பவாங் வட்டாரம் அதன் வளமான வரலாற்றையும் தனித்துவமான அடையாளத்தையும் தக்க வைத்துக் கொண்டு, அனைத்து குடியிருப்பாளர்களுக்கும் நவீன, இணைக்கப்பட்ட மற்றும் அனைவரையும் உள்ளடக்கிய இடமாக தொடர்ந்து பரிணமித்து வருகிறது.

நமது செம்பவாங் வட்டார வளர்ச்சிக்கு பங்களித்த அனைவருக்கும் நன்றி. உங்கள் கருத்துக்கள் மற்றும் பரிந்துரைகள், இன்று நாம் காணும் திட்டங்கள் மற்றும் மேம்பாடுகளை வடிவமைப்பதில் முக்கிய பங்கு வகித்துள்ளன.

கடந்த ஐந்து ஆண்டுகளில் குறிப்பிடத்தக்க புதிய முன்னேற்றங்களில் புக்கிட் கான்பெரா, மறுவடிவமைப்பு செய்யப்பட்ட அட்மிரல்டி பிளேஸ் மற்றும் உட்லண்ட்ஸ் சுகாதார வளாகம் ஆகியவை முதன்மை. இவை குடியிருப்பாளர்களுக்கு புதிய வசதிகள் மற்றும் பயன்பாடுகளை கொண்டுவந்தன. தாம்சன் கிழக்கு கடற்கரை பாதையை முதலில் நகரத்திற்கும் பின்னர் கிழக்குக்கும் நீட்டித்தது நமது குடியிருப்பாளர்களுக்கு போக்குவரத்தை மிகவும் எளிதாக மாற்றியுள்ளது.

கான்பெராவில், புதிய வசதிகள் மற்றும் குடியிருப்பு மேம்பாடுகளில் முன்னேற்றம் ஏற்பட்டுள்ளதால், குடும்பங்கள் விரும்பப்படும் பகுதியாக இது மாறியுள்ளது. புதிய "பில்ட் டு ஆர்டர்" (BTO) அடுக்குமாடி குடியிருப்புகளின் தொடர்ச்சியான கட்டுமானம் மூலம் மேலும் பல வீட்டு வாய்ப்புகள் உருவாக்கப்பட்டு, அதிகமான சிங்கப்பூரர்கள் செம்பவாங்கை தங்களுடைய இடமாக அழைக்க வாய்ப்பு அளிக்கும்.

"மூத்தோருக்கான மேம்பாட்டுத் திட்டம்" மூலம் நமது மூத்த குடிமக்களின் வாழ்க்கை நிலைமைகளை மேம்படுத்துவதையும், அவர்களுக்கு பாதுகாப்பான வசதிகள் மற்றும் சேவைகளை அணுகுவதை உறுதி செய்வதையும் நோக்கமாகக் கொண்டுள்ளது.

வரும் ஆண்டுகளில், மிகவும் எதிர்பார்க்கப்படும் முக்கிய திட்டங்களில் ஒன்று, உட்லேண்ட்ஸ் வடக்கு கடற்கரை உருமாற்றமாகும். இது புதிய வணிக வாய்ப்புகள், வேலை, வாழ்விடங்கள் மற்றும் பொழுதுபோக்கு இடங்களை உருவாக்கி, ஜோகூர் பாரு - சிங்கப்பூர் விரைவு போக்குவரத்து அமைப்பு (RTS) இணைப்புடன் தடையின்றி இணைந்த கடற்கரை இடமாக மாறும். இந்த மேம்பாடு - வேலை மற்றும் பொழுதுபோக்கு இரண்டிற்கும் ஓர் உயிரோட்டமான மையத்தை உருவாக்கி, வடக்கு பகுதியின் வளர்ச்சியை ஊக்குவிக்கும்.

செம்பவாங் வட்டாரத்தின் வளர்ச்சி, அதன் வரலாற்றையும் சமூக உணர்வையும் காப்பாற்றி, எதிர்காலத்திற்குத் தயாராக இருக்கும் வட்டாரத்தை உருவாக்குவதற்கான நமது பகிரப்பட்ட தொலைநோக்குப் பார்வையின் சிறந்த சான்றாகும்.

இந்த சிறப்புப் பதிப்பை நீங்கள் ரசிப்பீர்கள் என்று நம்புகிறோம், 2025 சிறப்பாக அமைய வாழ்த்துகள்!

விக்ரம் நாயர்
செம்பவாங் நகர மன்ற தலைவர்



BELANJA A MEAL

Launched in September 2020, the Belanja A Meal (BAM) initiative aims to support those impacted by COVID-19 and help vulnerable groups, such as low-income families and the elderly. The programme fosters community solidarity and ensures no one goes hungry during tough times.

Currently, 22 coffee shops and 135 stalls across Sembawang Town are involved, benefiting over 600 locals, with around 150 beneficiaries from low-income families. Through BAM, these families receive 15 meals per month, valued at \$4 each.

The success of BAM relies on generous donations. Every dollar helps provide a fresh meal for someone in need. When visiting a participating coffee shop, simply tell the drink stall assistant your donation amount, which goes into a central fund. Beneficiaries can then scan their BAM cards to receive a token, which can be used to redeem meals at any participating stall.

COMMUNITY PARTNERSHIP



1. Blossom Seeds Limited

Blossom Seeds Limited (BSL) is dedicated to supporting seniors in maintaining an active lifestyle during their golden years. BSL aims to help seniors achieve good health, dignity, and economic independence by fostering social connections and engagement through continuous learning and volunteer opportunities. These efforts contribute to their overall well-being, purpose, and happiness, while also helping to reduce national healthcare costs.

BSL offers three programs in collaboration with the Agency for Integrated Care to assist seniors in need within Sembawang Town. These programs include the Medical Escort & Transport, Befriending Programme, and Active Ageing Centre.

2. Care Corner

Care Corner has greatly benefited residents of Sembawang Town by offering a range of essential services, including family counselling, youth development programmes, elderly care, and mental health support. Through initiatives like financial aid, food distribution, and senior activities, they address the needs of vulnerable groups, such as low-income families, at-risk youth, and isolated seniors. These programmes strengthen family bonds, promote youth resilience, and improve the overall well-being of residents. As a result, Care Corner plays a pivotal role in fostering community support and cohesion in Sembawang.

QUARTERLY WECARE DISTRIBUTION



PROJECT WOLBACHIA

SINGAPORE



PROJECT WOLBACHIA

Since 2022, Project Wolbachia has expanded to Sembawang. We have since been collaborating with the Project Wolbachia team at the National Environment Agency to release male Wolbachia mosquitoes into our estates biweekly. While residents might notice an increase in mosquito activity, these male mosquitoes do not bite or transmit disease. Nevertheless, continue protecting yourself with the Mozzie Wipeout and regular insect repellent use. For more information about Project Wolbachia, visit go.gov.sg/Wolbachia.

GREEN INITIATIVES

Sembawang embraces green initiatives to promote sustainability and environmental responsibility within our community. The introduction of various recycling bins underscores this commitment.



Cloop Textile Recycling Bins: Divert textiles from landfills and allow them to be repurposed or recycled into new products.



ALBA E-Waste Bins: Safely dispose of old or broken electronics and support the proper recycling of valuable components.



I-BIN is an integrated bin with 3 compartments for Paper, Fabrics and E-waste and other metal items, to prevent contamination.

Additionally, under the **Action for Green Towns** initiatives, Sembawang has increased solar panel use to harness renewable energy and reduce our community's carbon footprint. Sustainability corners have also been set up to raise awareness and educate residents on eco-friendly practices.

Bukit Canberra Integrated Sports and Community Hub

Bukit Canberra Integrated Hub is rapidly becoming a cornerstone of Sembawang Town's community — it embodies the vision of a self-sustaining and vibrant Sembawang. At Bukit Canberra, we have Singapore's largest ActiveSG gym, a hawker centre offering a wide variety of local delights, an indoor swimming pool, Sembawang Polyclinic, and a therapeutic garden. The recent launch of Bukit Canberra Phase 3, featuring the Forest Gym and Canberra Cove, represents another significant milestone for our residents. The opening of Bukit Canberra is just one of the many exciting developments in Sembawang GRC over the years. We look forward to the opening of the dog run park and thematic gardens in the second half of 2025.





Healthcare in our Sembawang Town is well-supported by a range of comprehensive facilities designed to meet the needs of residents. The Woodlands Health Campus, a major regional healthcare hub, provides advanced medical services and specialised care, enhancing accessibility to quality health services. Additionally, the Sembawang Polyclinic offers a wide array of primary healthcare services so residents have convenient access to essential medical care. The Admiralty Medical Centre further complements this network with its range of outpatient services and healthcare support. Together, these facilities contribute to a well-rounded healthcare system where our residents' well-being is prioritised.

WOODLANDS HEALTH CAMPUS



SEBBAWANG POLYCLINIC



ADMIRALTY MEDICAL CENTRE



Sembawang is dedicated to supporting seniors through a range of initiatives that enhance their quality of life. For example, the Enhancement for Active Seniors (EASE) programme provides subsidies for home modifications to improve mobility and safety for elderly. This includes the installation of grab rails, slip-resistant flooring, and accessible bathroom fittings, as well as making adjustments for wheelchair users.

Additionally, the community promotes active ageing by providing curated facilities. They encourage physical health through exercise programmes, foster social connections through group activities, and support mental well-being through cognitive and recreational programmes. This approach ensures comprehensive care for seniors.



EASE PROGRAMME

The EASE programme, part of the Home Improvement Programme, provides subsidies for various installations aimed at improving mobility and safety within residents' flats. This initiative includes the fitting of essential features such as grab rails, slip-resistant flooring treatments, and wall-mounted foldable shower seats. It also offers modifications such as lowering entrance kerbs, adding handrails, and installing bidet sprays and rocker switches. For residents using wheelchairs or commodes, EASE supports the installation of ramps and widening of doorways. Additionally, the programme includes the fitting of home fire alarm devices to further ensure safety for our seniors.

ACTIVE AGEING FACILITIES

Ageing well requires seniors to be active both mentally and physically. Sembawang supports our seniors with the variety of active ageing centres available for the elderly residents of Sembawang. These centers offer comprehensive assistance that addresses the emotional, social, and physical needs in a senior's life.





**Senior Gym @ NTUC Health Active Ageing Centre (Care)
(Kampung Admiralty)**

Address: 676 Woodlands Drive 71 #06-01,
Singapore 730676
Tel. No.: +65 9028 2440



Sunlove Activity Centre-Golden Saffron

Address: Blk 764B Woodlands Circle #01-208,
Singapore 732764
Tel. No.: +65 6462 2032
Email: goldensaffronaac@sunlove.org.sg



Blossom Seeds (Main Office)

Address: Blk 105 Canberra Street #02-01/06,
Singapore 750105
Tel. No.: +65 6259 8614



SPD @ Canberra Senior Care Centre

Address: 21 Canberra Link, #02-03,
Singapore 756973
Tel. No.: +65 6579 0700

ELDERLY FITNESS CORNERS

Seniors can stay active and healthy with the Elderly Fitness Corners conveniently located near their homes!



SG WOMEN'S FESTIVAL



MID-AUTUMN FESTIVAL



TREE PLANTING IN COMMEMORATION OF LKY100



CANBERRA ADVENTUREFEST



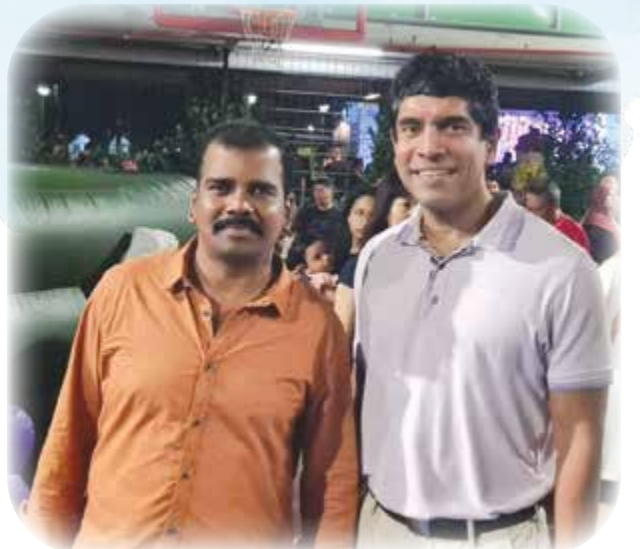
BLOCK PARTIES



NATIONAL DAY



COUNTDOWN



Sembawang is home to a diverse range of people, from our dedicated conservancy workers to your friendly neighbours. Let's hear what they have to say!

“ I am very proud that Sembawang has transformed into an awesome estate with many modern amenities for residents to behold and enjoy! Definitely not ‘ulu’ anymore compared to the olden days!

- Ros, Resident of Sembawang Central



“ I have been living in Canberra for the past 17 years. Like many of my fellow residents, I love the peaceful and quiet neighbourhood, including its closeness to the JB Customs. Among my favourite memories is taking my kid to the water park just below our house.

- Kieren, Resident of Canberra

“ I am very happy with the outcome and new facilities of our toilet.

- Nyok On, Resident of Woodlands



“ The monthly food distribution at Sembawang West has helped me cut down on expenses, and this greatly helped my family financially. I am grateful for the community initiatives here.

- Li Lian, Resident of Sembawang West



“ I’ve worked in Singapore for 9 years and I feel happy working here. I usually cook during my off days or head to Sun Plaza to catch up with my friends.

- Polash, CV Supervisor



“ I enjoy working in Sembawang. There may be bad days sometimes, but I love everything about my job.

- Sahadat Hossain Mamun, CV Supervisor



What's Next in Sembawang Town?

Looking ahead, Sembawang Town is set to continue its transformation while preserving its rich heritage. From its rustic kampung roots, steeped in history and colonial architecture, the town has evolved into a modern, vibrant community. Future developments will further enhance residential and commercial spaces, while the Woodlands North Coast transforms into a dynamic waterfront area. We can expect continued improvements in green spaces, recreational facilities, and healthcare services. As we embrace these advancements, we remain committed to preserving the unique spirit of Sembawang, blending its historical charm with contemporary growth to create a dynamic and inclusive environment for all our residents.

